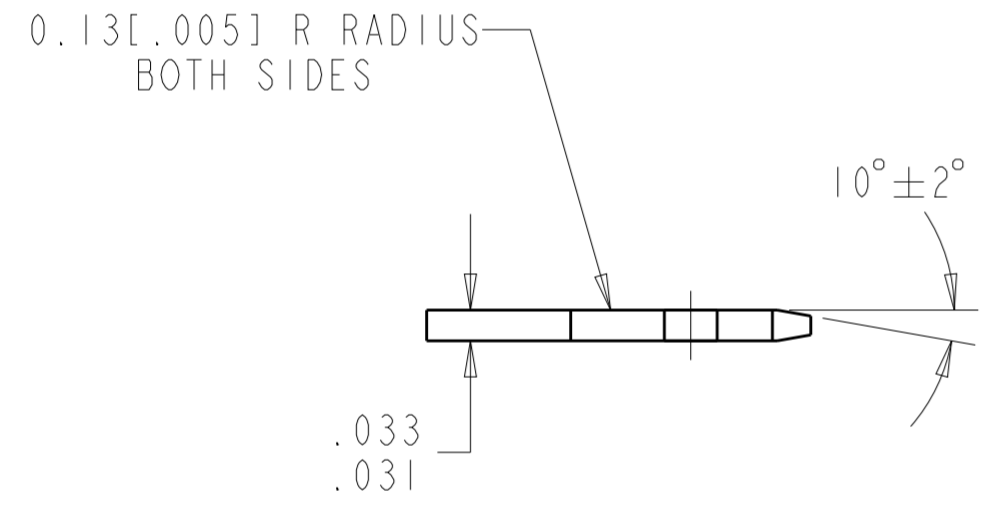
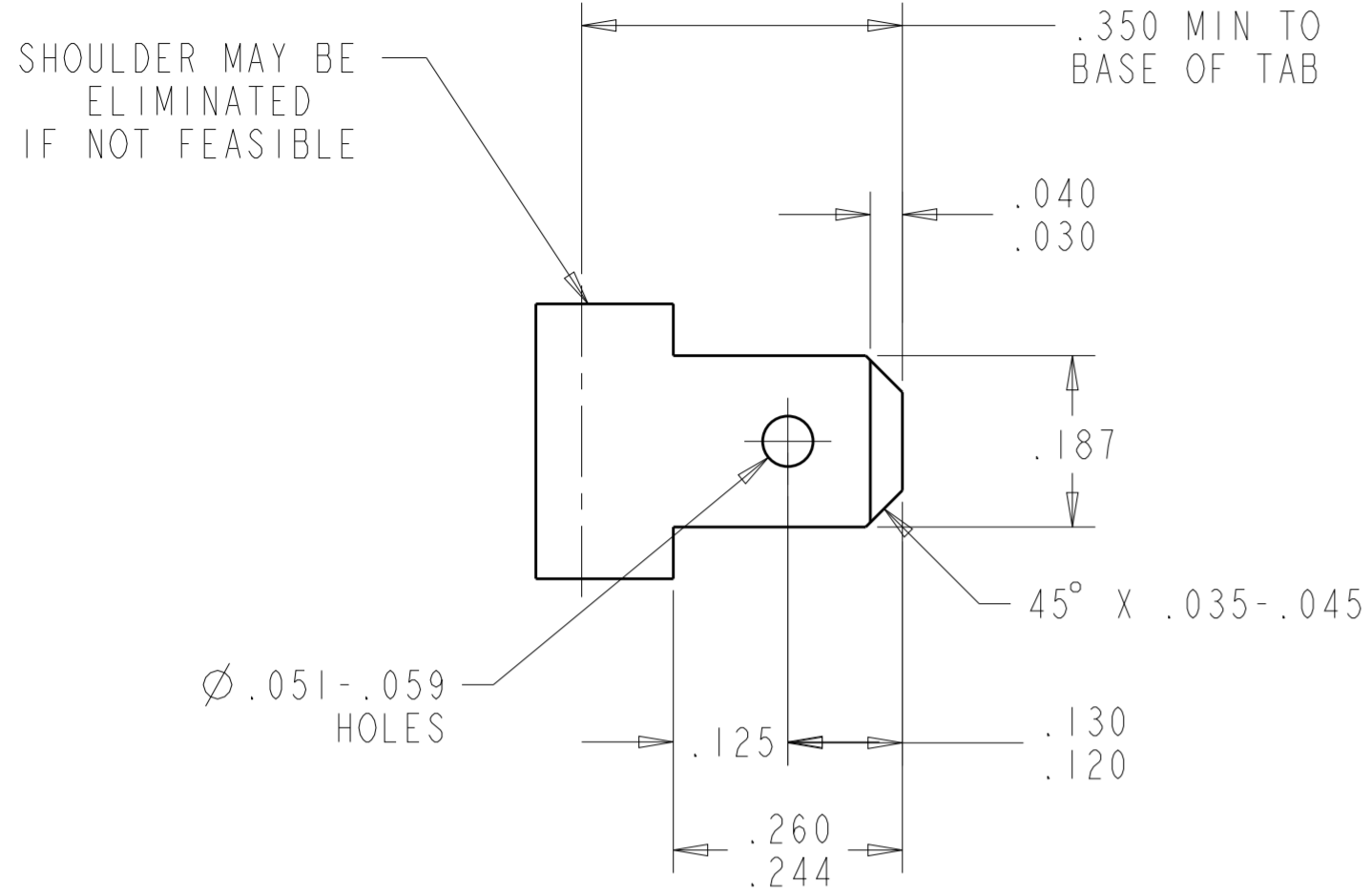
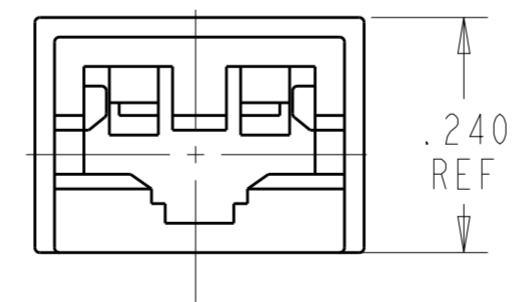
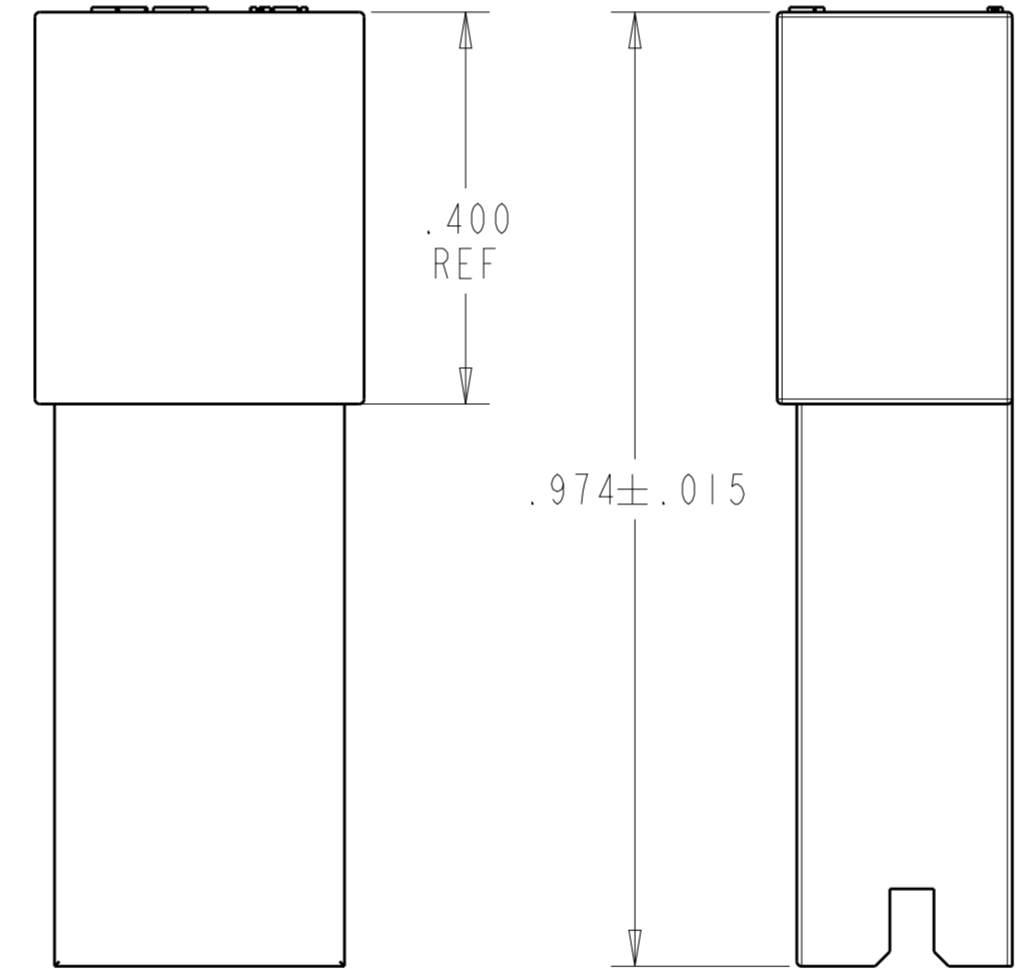
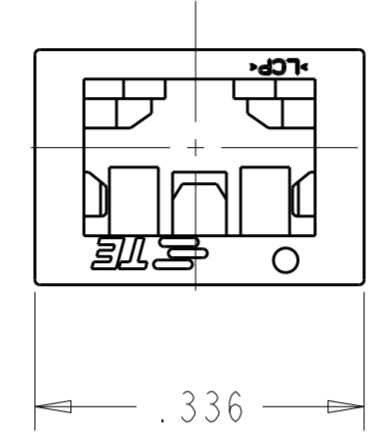


THIS DRAWING IS UNPUBLISHED. RELEASED FOR PUBLICATION  
 © COPYRIGHT copyright.dBTe- ALL RIGHTS RESERVED.

REVISIONS				
P	LTR	DESCRIPTION	DATE	APVD
8		REVISION	23OCT2017	RS MD
A		RELEASED PER ECR-18-007502	21MAY2018	MD TD



- 1 MATERIAL: 1/2 H BRASS OR NICKEL PL STEEL.
- 2 NO BURRS PERMISSIBLE AT HOLE.
- 3 MUST BE FLAT WITHIN 0.076[.003] OVER THIS LENGTH.
- 4 TIN PLATING IS REQUIRED ON BRASS WHEN TERMINAL TEMP. IS OVER 225°F
- 5 HOLE MUST BE SYMMETRICAL ABOUT TAB  $\phi$  WITHIN 0.076[.003]  
\* TO BE USED ONLY WHEN SHOULDER IS ELIMINATED.



- 1 FOR USE WITH MKII POSITIVE LOCK TERMINAL 2238178
- 2 THIS PART HAS NOT COMPLETED QUALIFICATION TESTING

LCP	1969877-1
MATERIAL	PART NUMBER

THIS DRAWING IS A CONTROLLED DOCUMENT.		DWN 28MAR2017 NAGALAKSHMI K	TE Connectivity	
DIMENSIONS: IN		CHK 28MAR2017 DIDONATO, MICHAEL F		
TOLERANCES UNLESS OTHERWISE SPECIFIED:		APVD 28MAR2017 DING, TIM	NAME 187 MARK II POSITIVE LOCK HIGH TEMPERATURE HOUSING	
0 PLC ±		PRODUCT SPEC -	SIZE A2	
1 PLC ±		APPLICATION SPEC -	CAGE CODE -	
2 PLC ±		WEIGHT -	DRAWING NO C-1969877	
3 PLC ±.015		CUSTOMER DRAWING	RESTRICTED TO -	
4 PLC ±		SCALE 5:1	SHEET OF 1	
ANGLES ±		REV A		
FINISH -				